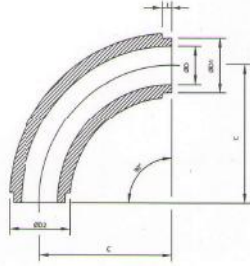


MOULDED ELBOW (BUTWELD TYPE)



AVAILABLE M.O.C.:

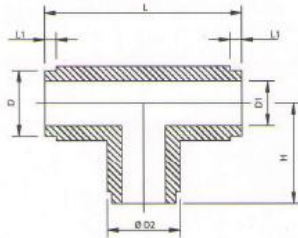
PP (POLYPROPYLENE)
 HDPE (HIGH DENSITY POLYETHYLENE)
 ISOTACTIC PP
 PVDF (POLYVINYLIDENE FLUORIDE)

ALL DIMENSIONS ARE IN MM (±2 MM)

SIZE	C	ØD	ØD1	ØD2	L±1
IN. MM					
½" 20	35.5	14.0	21.0	23.0	3.0
¾" 25	40.0	19.0	25.0	28.0	4.0
1" 32	48.0	24.0	32.0	35.5	5.0
1 ¼" 40	60.0	29.0	40.0	43.0	6.0
1 ½" 50	71.0	37.0	50.0	54.0	8.0
2" 63	80.0	47.5	63.0	65.0	10.0
2 ½" 75	90.0	59.0	75.0	78.0	12.0
3" 90	109.0	73.0	90.0	95.0	14.0
4" 110	135.0	88.0	108.5	114.0	15.0
5" 125	159.0	125.0	125.0	103.0	---
5 ½" 140	168.0	140.0	140.0	112.0	---
6" 160	220.0	133.5	158.5	169.0	16.0
7" 180	225.0	180.0	150.0	190.0	7.0
8" 200	247.0	200.0	174.0	203.0	15.0

AS PER IS : 8008 - 1976 (PART I)
 MAX. WORKING PRESSURE 10kg / cm²

MOULDED TEE (BUTWELD TYPE)



AVAILABLE M.O.C.:

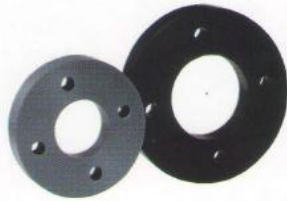
PP (POLYPROPYLENE)
 HDPE (HIGH DENSITY POLYETHYLENE)
 ISOTACTIC PP
 PVDF (POLYVINYLIDENE FLUORIDE)

ALL DIMENSIONS ARE IN MM (±2 MM)

SIZE	D	D1	ØD2	H	L	L
IN. MM						
½" 20	20.5	14.5	24.0	25.0	50.0	3.0
¾" 25	26.0	19.5	28.5	31.0	61.5	4.0
1" 32	32.5	25.0	36.0	37.0	75.5	5.0
1 ¼" 40	40.5	31.0	43.5	44.5	90.0	6.0
1 ½" 50	19.5	38.0	53.0	47.5	98.0	8.0
2" 63	62.5	49.0	66.0	57.0	115.5	10.0
2 ½" 75	73.0	59.5	79.0	80.0	164.5	12.0
3" 90	91.0	75.0	95.5	95.0	194.0	14.0
4" 110	109.0	89.0	114.0	118.5	238.0	15.0
6" 160	160.0	135.0	168.0	171.0	345.0	16.0
8" 200	200.0	170.0	206.0	218.0	432.0	18.0

AS PER IS : 8008 - 1976 (PART II)
 MAX. WORKING PRESSURE 10kg / cm²

SLIPON FLANGE

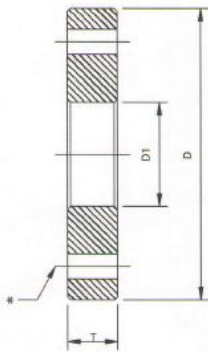


AVAILABLE M.O.C. :

PP (POLYPROPYLENE)
 HDPE (HIGH DENSITY POLYETHYLENE)
 ISOTACTIC PP
 PVDF (POLYVINYLIDENE FLUORIDE)

* FLANGE DRILLED

ANSI B 16.5 (150 CLASS)
 BS 10 TABLE D
 BS 10 TABLE E
 BS 10 TABLE F
 DIN. STD

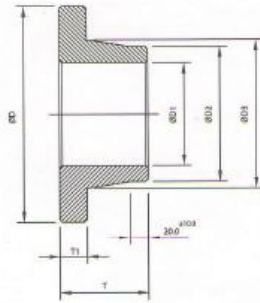


ALL DIMENSIONS ARE IN MM (±2 MM)

SIZE		ØD	ØD1	T
IN.	MM.			
½"	20	95.0	25.5	16.0
¾"	25	101.0	32.0	17.5
1"	32	122.5	37.0	18.5
1 ½"	40	134.0	47.0	19.0
1 ¼"	50	140.0	57.0	21.0
2"	63	164.0	70.0	21.0
2 ½"	75	184.0	83.0	21.0
3"	90	202.5	97.5	22.0
4"	110	228.0	118.0	22.5
5"	125	266.0	133.0	23.0
5 ¼"	140	263.0	145.0	24.5
6"	160	298.5	167.0	25.5
7"	180	329.0	188.0	27.0
8"	200	375.0	207.5	30.0
9"	225	398.0	233.0	32.5
10"	250	427.0	257.0	30.5
11"	280	451.0	287.0	32.0
12"	315	489.0	325.0	29.0

AS PER IS : 8008 - 1976 (PART VII)
 MAX. WORKING PRESSURE 10kg / cm²

LONG NECK PIPE END



AVAILABLE M.O.C.:

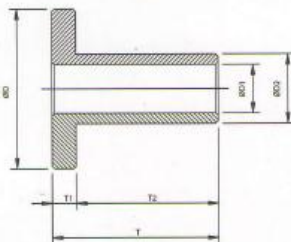
PP (POLYPROPYLENE)
 HDPE (HIGH DENSITY POLYETHYLENE)
 ISOTACTIC PP
 PVDF (POLYVINYLIDENE FLUORIDE)

ALL DIMENSIONS ARE IN MM (±2 MM)

SIZE IN.	MM.	Ø D	Ø D1	Ø D2	Ø D3	T	T1
½ "	20	52.0	14.0	21.0	25.5	37.0	10.0
¾ "	25	61.0	18.0	25.5	29.0	37.5	11.0
1 "	32	65.5	23.5	32.5	36.0	51.0	12.0
1 ¼ "	40	71.0	27.0	40.0	44.0	50.0	12.0
1 ½ "	50	75.0	39.0	50.0	53.0	48.5	11.5
2 "	63	95.0	47.5	63.0	66.0	50.0	12.5
2 ½ "	75	105.0	56.0	75.5	78.5	49.0	14.0
3 "	90	122.0	68.5	90.0	94.0	78.5	18.0
4 "	110	155.0	84.0	110.0	116.0	79.5	20.0
5 "	125	188.0	97.5	126.0	132.0	78.0	19.0
5 ¼ "	140	195.0	113.0	140.5	147.0	78.0	22.5
6 "	160	211.0	128.0	160.0	165.0	80.0	25.0
7 "	180	228.0	148.0	181.0	184.5	81.0	28.0
8 "	200	241.0	167.0	200.0	207.0	79.0	23.0
9 "	225	273.5	191.0	225.0	231.5	79.0	32.5
10 "	250	294.0	209.0	248.5	250.0	79.5	31.0
11 "	280	325.0	216.0	280.0	285.0	94.5	31.0
12 "	315	373.0	255.0	314.5	317.0	94.5	31.0
14 "	355	433.0	302.0	355.0	369.0	98.0	50.0
16 "	400	490.0	338.0	400.0	418.0	97.0	48.0
18 "	450	536.0	380.0	450.0	466.0	97.0	50.0
20 "	500	598.0	420.0	500.0	526.0	95.0	48.0
22 "	560	697.0	487.0	559.0	593.0	98.0	50.0
24 "	630	705.0	547.0	630.0	640.0	98.0	50.0

AS PER IS : 8008 - 1976 (PART VI)
 MAX. WORKING PRESSURE 10kg / cm²

EXTRA LONG PIPE END - Tail Piece



AVAILABLE M.O.C.:

PP (POLYPROPYLENE)
 HDPE (HIGH DENSITY POLYETHYLENE)

ALL DIMENSIONS ARE IN MM (±2 MM)

SIZE IN.	MM.	Ø D	Ø D1	Ø D2	T	T1	T2
1 "	25	65	25	32	182	16	166
1 ¼ "	32	72	32	40	181	20	161
1 ½ "	40	80	38	50	181	20	161
2 "	50	96	50	63	181	20	161
2 ½ "	65	105	55	75	201	25	176
3 "	80	125	74	90	181	21	160
4 "	100	155	86	110	181	21	160
6 "	150	214	124	160	172	21	151

MAX. WORKING PRESSURE 10kg / cm²