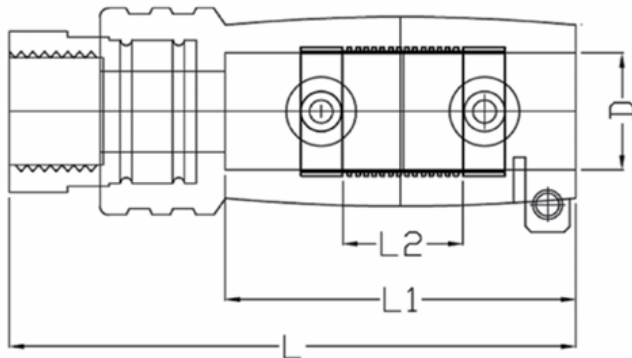


## Transition Coupler - IC

Standard: BS EN 12201-3:2011 / EN 1555-3 : 2021

Material : PE-100, Black Colour

Pressure Rating: SDR11/PN16



Dimensions (mm)

Size	D	L	L1	L2	Thread
20x1/2" - IC	20.00 - 20.50	96.00 - 99.00	61.00 - 63.00	16.00 - 18.00	1/2" NPT/BSP
32x1/2" - IC	32.00 - 32.50	103.00 - 106.00	49.00 - 51.00	18.00- 20.00	1/2" NPT/BSP
32x3/4" - IC	32.00 - 32.50	103.00 - 106.00	49.00 - 51.00	18.00- 20.00	3/4" NPT/BSP
32x1" - IC	32.00 - 32.50	103.00 - 106.00	49.00 - 51.00	18.00- 20.00	1" NPT/BSP